



CASCA

Balcony Solar Station

Shenzhen JiaBoXin Technology Co., Ltd.

contents

About JiaBoXin(Casca)

1

Our Advantages

2

Product introduction

3





About JiaBoXin(Casca)

Shenzhen JiaBoXin Technology, a professional manufacturer specializing in the development and production of Solar Panels, Balcony Solar Station, Solar Power Home Energy Storage System, Industrial and Commercial Energy Storage Systems. the founder has over 15 years of solar panels, solar power station, battery & ESS industry experience. Covering an area of 10000 square meters factory, we have over 300management, R&D and production personnel.



15years +
Experience



2013
Established



\$10 Million
Registered capital

JiaBoXin(Casca) adheres to customer-centricity, and provides customers with competitive and trust worthy products and services through continuous innovation around customer needs.

Support solar panels & balcony solar station & battery and solar power system energy storage system complete solutions, independently develop energy storage BMS battery cloud platform and EMS energy storage man-agement system. We have been certified by CB, CE (EMC&LVD), UL1973, UL9540A, BIS, TUV, ISO9001 and ISO14001 and other international certifications. And We based on high quality services and good quality control system, we have established cooperative relations with hundreds of customers in more than 50 countries around the world and have gained a good market reputation.

Our Advantages

Higher Efficiency Solar Station

Our Solar Balcony solar panel using higher efficiency 182mm & 210mm solar cell. and width range voltage MPPT Micro Inverter

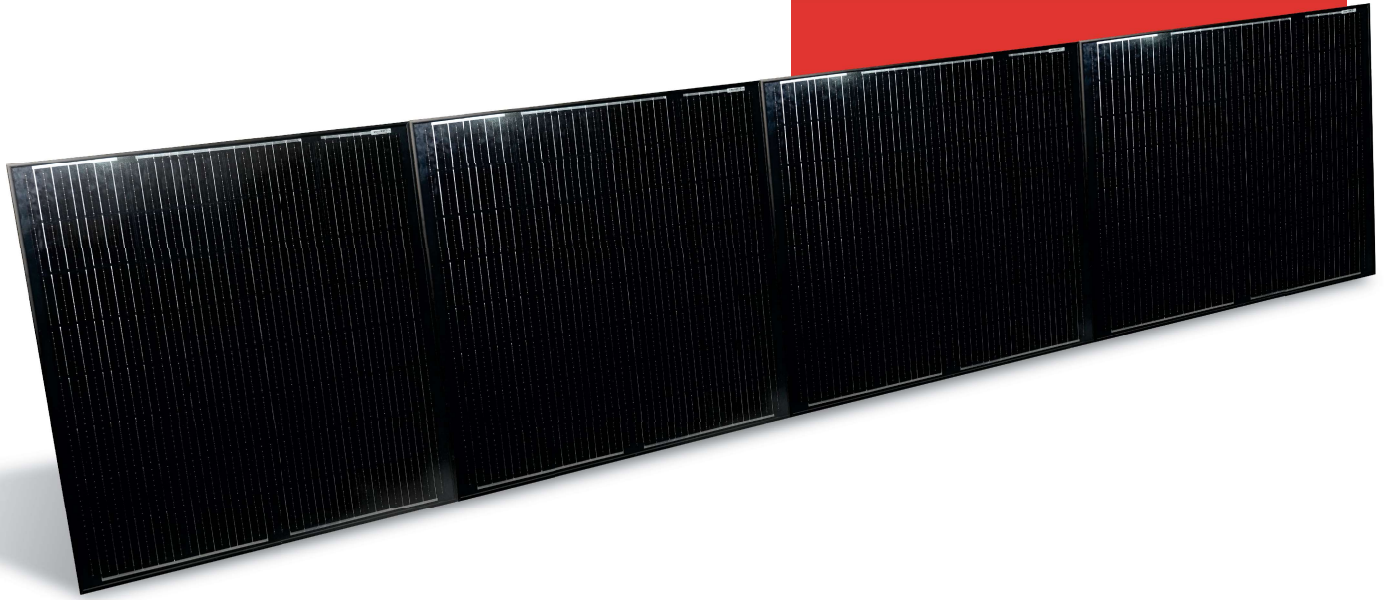
15 years of solar panels, solar power station, battery & ESS manufacturnig experience. Professional company.

Independent research and delopment of solar power station, EMS, cloud platform to ensure the safety and stability of the products. Full automatic solar panels production line

Intelligent operation and maintenance backstage, view the system status, easily obtain information

Systematic service process
after-sales service network all over the world

CABS600W-A



Mono cell

All Black

Power: 150 X 4=600 Wp

Inverter Power: 600W

Inverter Output: 230Vac/50Hz

Solar Panel Total Power: 600W

Installation Angle: 30°, 45°, 60°

Solar Panel Size: 876*876*30 mm

DC Extension Cable: 4 Meters

AC Sockets with AC Extension Cable: 5 meters

IP Rating: IP65

Working Temperature: -20°C to 60°C

Solar Panel Installation: Wall and on Ground

Grid Voltage Range: 180Vac ~ 280Vac

Power Factor: 0.99

Communication: WIFI

Monitor: APP

370 pcs (40HQ can loading)

Mono cell

All Black

Power: 120 X 4=480 Wp

Inverter Power: 480W

Inverter Output: 230Vac/50Hz

Solar Panel Total Power: 480W

Installation Angle: 30°, 45°, 60°

Solar Panel Size: 765*765*30 mm

DC Extension Cable: 3 Meters

AC Sockets with AC Extension Cable: 5 meters

IP Rating: IP65

Working Temperature: -20°C to 60°C

Solar Panel Installation: Wall and on Ground

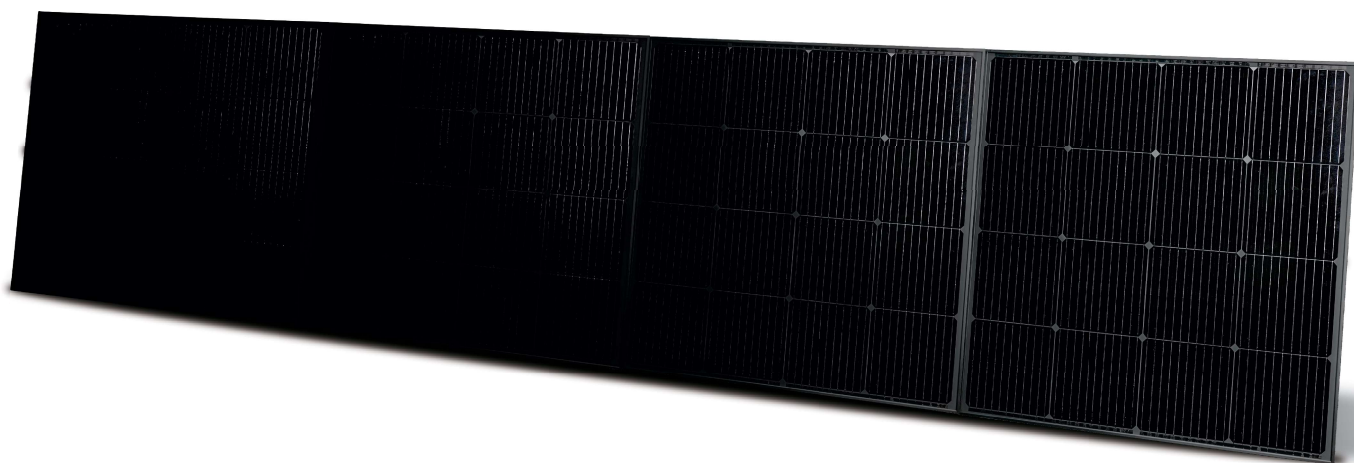
Grid Voltage Range: 180Vac ~ 280Vac

Power Factor: 0.99

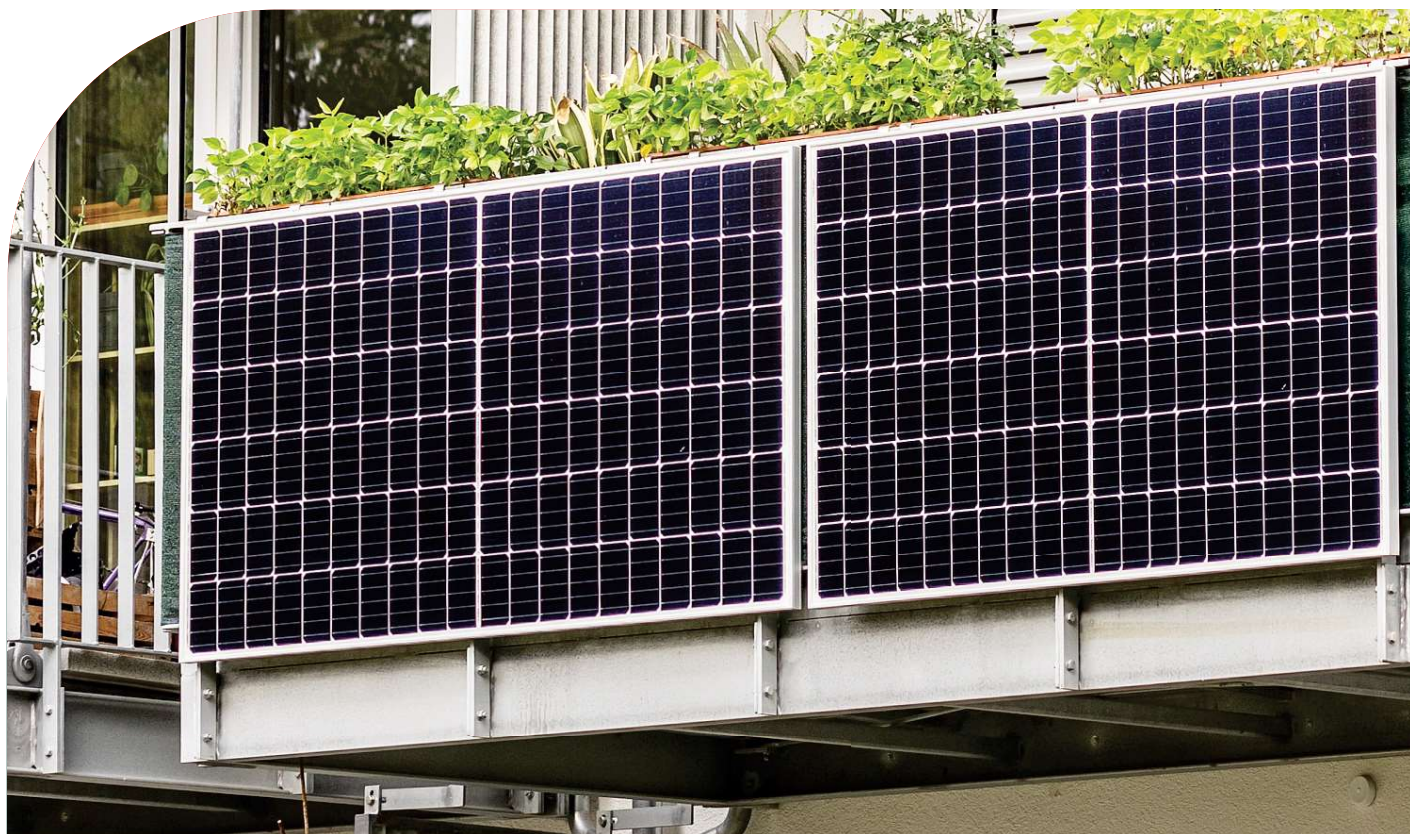
Communication: WIFI

Monitor: APP

450 pcs (40HQ can loading)



CABS480W-A



CABS600W-B

Mono cell

All Black

Power: 300 X 2=600 Wp

Inverter Power: 600W

Inverter Output: 230Vac/50Hz

Solar Panel Total Power: 600W

Installation Angle: 30°

Solar Panel Size: 1640*992*30 mm

DC Extension Cable: 3 Meters

AC Sockets with AC Extension Cable: 5 meters

IP Rating: IP65

Working Temperature: -20°C to 60°C

Solar Panel Installation: Wall and on Ground

Grid Voltage Range: 180Vac ~ 280Vac

Power Factor: 0.99

Communication: WIFI

Monitor: APP

425pcs (40HQ can loading)

CABS150W



Mono cell

All Black

Power: 150 X 1=150 Wp

Inverter Power: 150W

Inverter Output: 230Vac/50Hz

Solar Panel Total Power: 150W

Installation Angle: 30°

Solar Panel Size: 876*876*30 mm

AC Sockets with AC Extension Cable: 3 meters

IP Rating: IP65

Working Temperature: -20°C to 60°C

Solar Panel Installation: Wall and on Ground

Grid Voltage Range: 180Vac ~ 280Vac

Power Factor: 0.99

Communication: WIFI

Monitor: APP

1070pcs (40HQ can loading)



CABS410W

Mono cell

All Black

Power: 410 X 1=410 Wp

Inverter Power: 400W

Inverter Output: 230Vac/50Hz

Solar Panel Total Power: 410W

Installation Angle: 30°

Solar Panel Size: 1722*1134*30 mm

DC Extension Cable: 1 Meters

AC Sockets with AC Extension Cable: 3 meters

IP Rating: IP65

Working Temperature: -20°C to 60°C

Solar Panel Installation: Balcony and on Ground

Grid Voltage Range: 180Vac ~ 280Vac

Power Factor: 0.99

Communication: WIFI

Monitor: APP

702pcs (40HQ can loading)



CABS820W



Mono cell

All Black

Power: $410 \times 2 = 820 \text{ Wp}$

Inverter Power: 800W

Inverter Output: 230Vac/50Hz

Solar Panel Total Power: 820W

Installation Angle: 30°

Solar Panel Size: 1722*1134*30 mm

DC Extension Cable: 2 Meters

AC Sockets with AC Extension Cable: 3 meters

IP Rating: IP65

Working Temperature: -20°C to 60°C

Solar Panel Installation: Balcony and on Ground

Grid Voltage Range: 180Vac ~ 280Vac

Power Factor: 0.99

Communication: WIFI

Monitor: APP

468pcs (40HQ can loading)

Mono cell

All Black

Power: $450 \times 2 = 900 \text{ Wp}$

Inverter Power: 800W

Inverter Output: 230Vac/50Hz

Solar Panel Total Power: 900W

Installation Angle: 30°

Solar Panel Size: 1909*1134*30 mm

DC Extension Cable: 2 Meters

AC Sockets with AC Extension Cable: 3 meters

IP Rating: IP65

Working Temperature: -20°C to 60°C

Solar Panel Installation: Balcony and on Ground

Grid Voltage Range: 180Vac ~ 280Vac

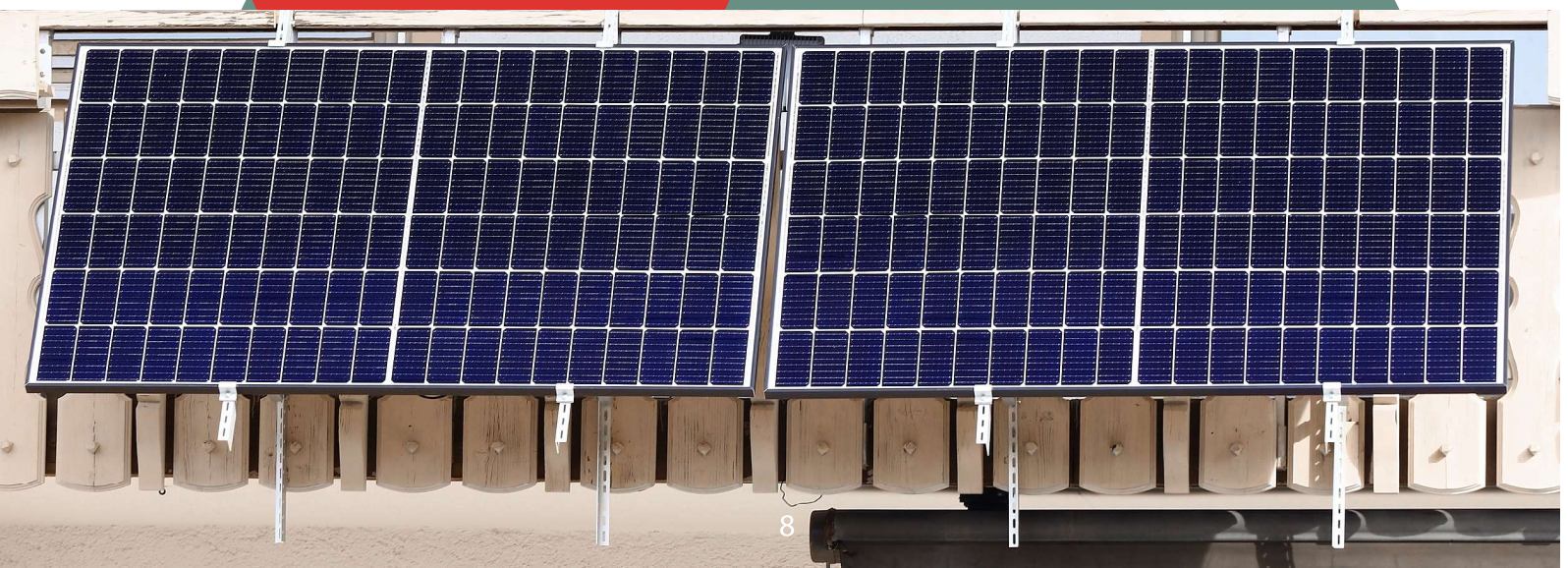
Power Factor: 0.99

Communication: WIFI

Monitor: APP

432Pcs (40HQ can loading)

CABS900W



CASCA

Shenzhen JiaBoXin Technology Co., Ltd

Contact: Benny

Mobile: +86-13066976677

Email: benny_hy@hongyibo.com

Web: www.cascaess.com

Address: 18/F, Hao Sheng Business Center
No. 68 Dongbin Road , Nanshan Community
Nanshan District, Shenzhen, P.R. China

